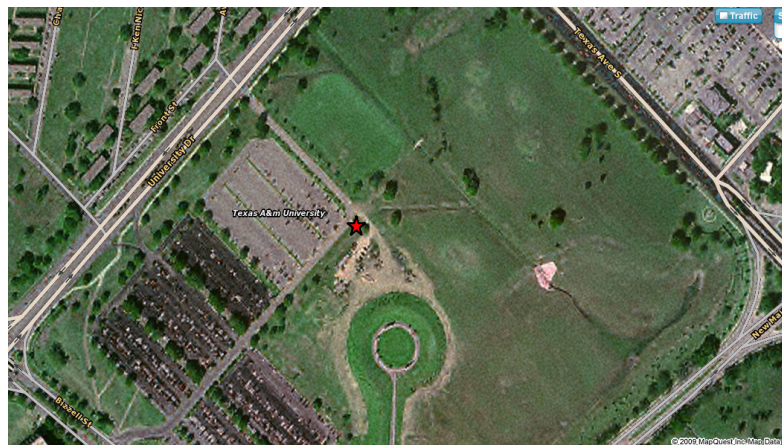


Course Instructions

This is a 1-mile orienteering course created by Ship 1876 on the Texas A&M campus. Please contact Scott Peltier with any questions/comments at Scott_Peltier@tamu.edu.

Directions:

The course is located on the Texas A&M main campus, in the polo fields at the corner of University Drive and Texas Avenue. The starting point is an emergency phone located at the rear of Lot 50. Parking is free on weekends and after 6PM weekdays (excluding football weekends).



Running the course:

Two copies of course information are provided, for Youths and Adults. Both copies contain bearings, distances (in feet), and GPS coordinates for each waypoint. *The GPS coordinates are provided as an assistance, and are not sufficient to complete the course without using the compass bearings.*

The adult version has a small description of each waypoint. The descriptions are not detailed, but they can help if there's confusion about a particular waypoint.

Advice/Warnings:

- There are several waypoints where magnetic interference may be an issue. For example, at waypoint #11 (“Edge of brick wall, by power meter”), have the boys take several steps away from the power meter for a more accurate bearing.
- This course will not take the boys across any roads/parking lots. Please call them back if you see them entering these areas.
- This course will not take the boys into the Bonfire Memorial. Please call them back if you see them entering the memorial during the course.

If you would like to run this course in tandem with Ship 1876, please contact us. Our Ship has experience in creating custom orienteering courses for troops. We would be glad to provide hands-on instructions to your boys, including basic compass usage and map skills.

Adult Copy

Waypoint	Bearing	Distance (ft)	GPS	Destination
Start	-	-	N 30 37.440 W 96 20.146	Emergency Phone
1	107	53	N 30 37.437 W 96 20.138	Little tree
2	12	191	N 30 37.464 W 96 20.125	Silver Box
3	95	744	N 30 37.440 W 96 19.988	Large oak (looks like Tree of Life)
4	40	178	N 30 37.464 W 96 19.960	Split tree
5	350	160	N 30 37.489 W 96 19.963	Tree behind a tree
6	265	216	N 30 37.489 W 96 20.005	King of the hill
7	5	412	N 30 37.562 W 96 19.992	Tree #327 (in line with Tace Cabana)
8	235	528	N 30 37.517 W 96 20.080	Middle of line of trees
9	315	331	N 30 37.558 W 96 20.124	Crape myrtle
10	12	411	N 30 37.622 W 96 20.099	Edge of brick wall, left of ATM emblem
11	115	217	N 30 37.603 W 96 20.061	Edge of brick wall, by power meter
12	152	1059	N 30 37.440 W 96 19.986	Large oak (looks like Tree of Life)
13	297	570	N 30 37.492 W 96 20.074	Crape myrtle
14	226	499	N 30 37.440 W 96 20.146	Emergency Phone

Youth Copy

Waypoint	Bearing	Distance (ft)	GPS
Start	-	-	N 30 37.440 W 96 20.146
1	107	53	N 30 37.437 W 96 20.138
2	12	191	N 30 37.464 W 96 20.125
3	95	744	N 30 37.440 W 96 19.988
4	40	178	N 30 37.464 W 96 19.960
5	350	160	N 30 37.489 W 96 19.963
6	265	216	N 30 37.489 W 96 20.005
7	5	412	N 30 37.562 W 96 19.992
8	235	528	N 30 37.517 W 96 20.080
9	315	331	N 30 37.558 W 96 20.124
10	12	411	N 30 37.622 W 96 20.099
11	115	217	N 30 37.603 W 96 20.061
12	152	1059	N 30 37.440 W 96 19.986
13	297	570	N 30 37.492 W 96 20.074
14	226	499	N 30 37.440 W 96 20.146